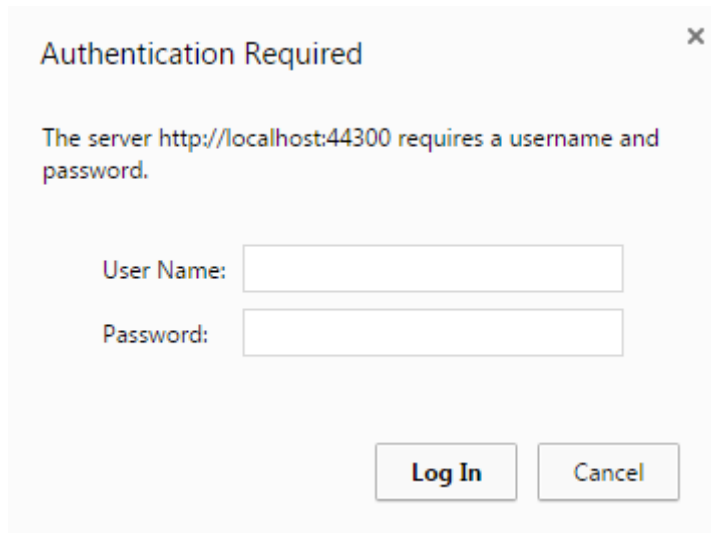


Configure Windows Server to allow signing in to EnhancedBI using Windows Authentication

If your EnhancedBI installation is set up to enable Active Directory integration, you might see a credentials popup like the one below instead of the usual EnhancedBI Login screen.

A screenshot of a Windows-style dialog box titled "Authentication Required" with a close button (X) in the top right corner. The message inside reads: "The server http://localhost:44300 requires a username and password." Below the message are two input fields: "User Name:" followed by a text box, and "Password:" followed by a text box. At the bottom right are two buttons: "Log In" and "Cancel".

Authentication Required

The server http://localhost:44300 requires a username and password.

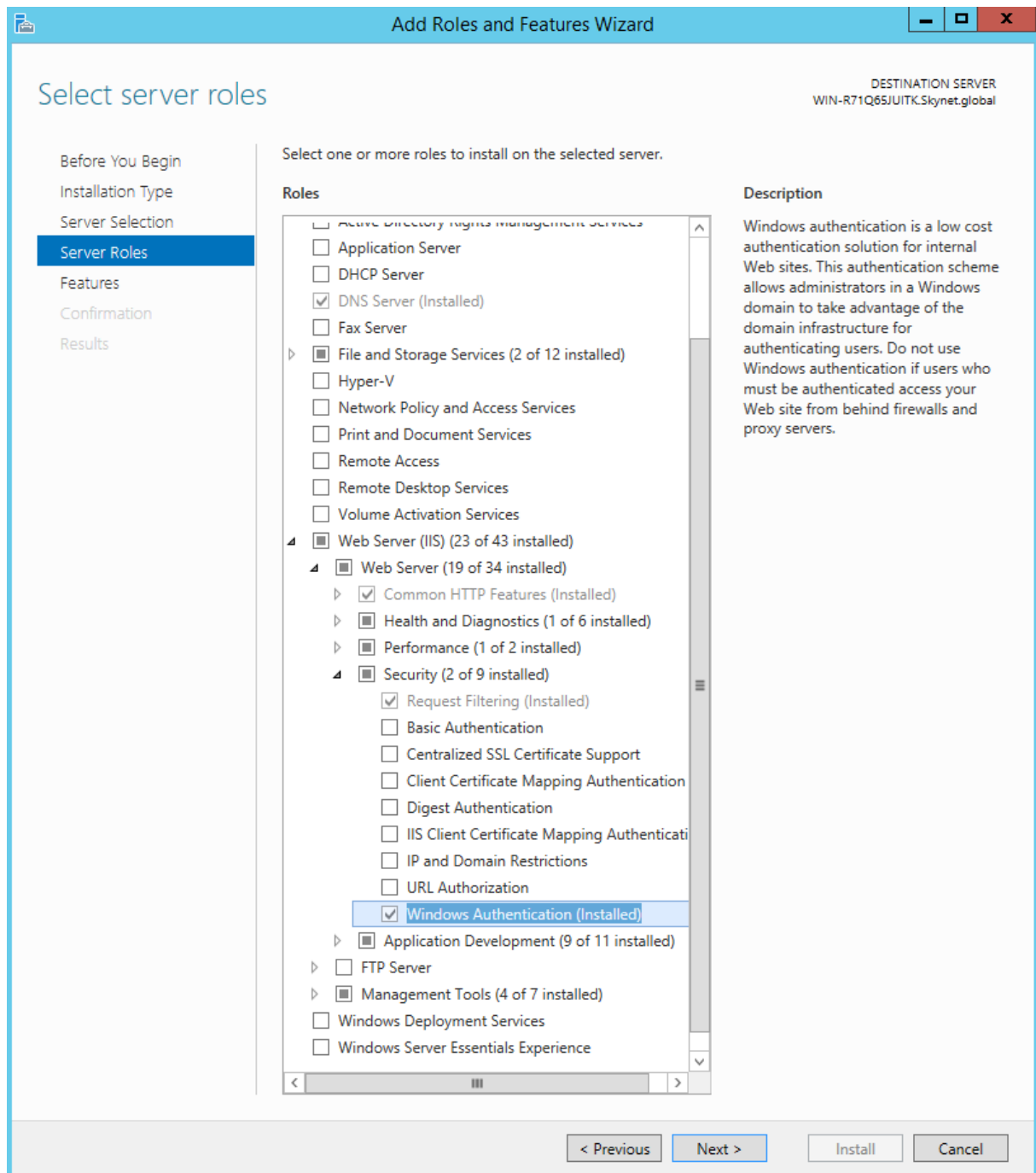
User Name:

Password:

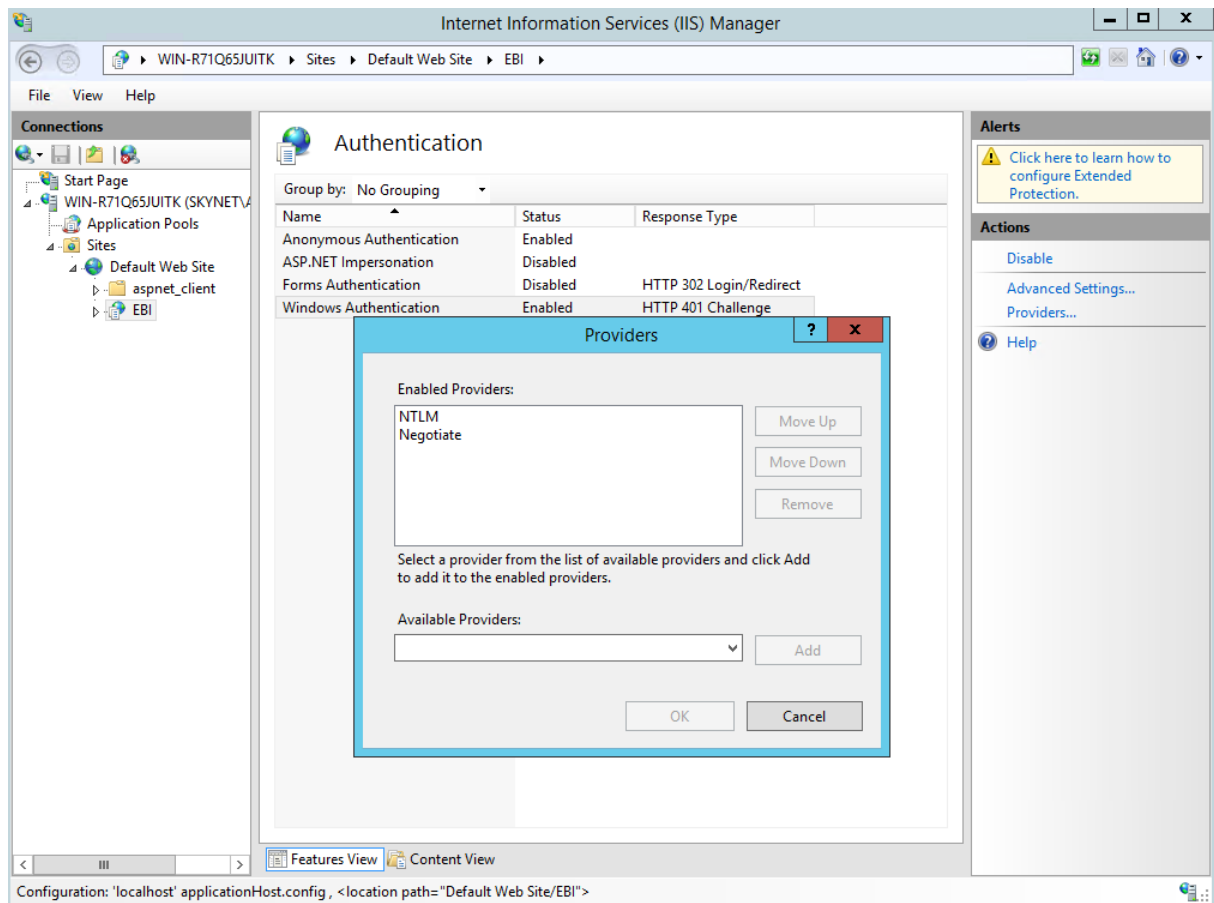
Log In **Cancel**

To prevent this popup from showing, please take the following steps on the server.

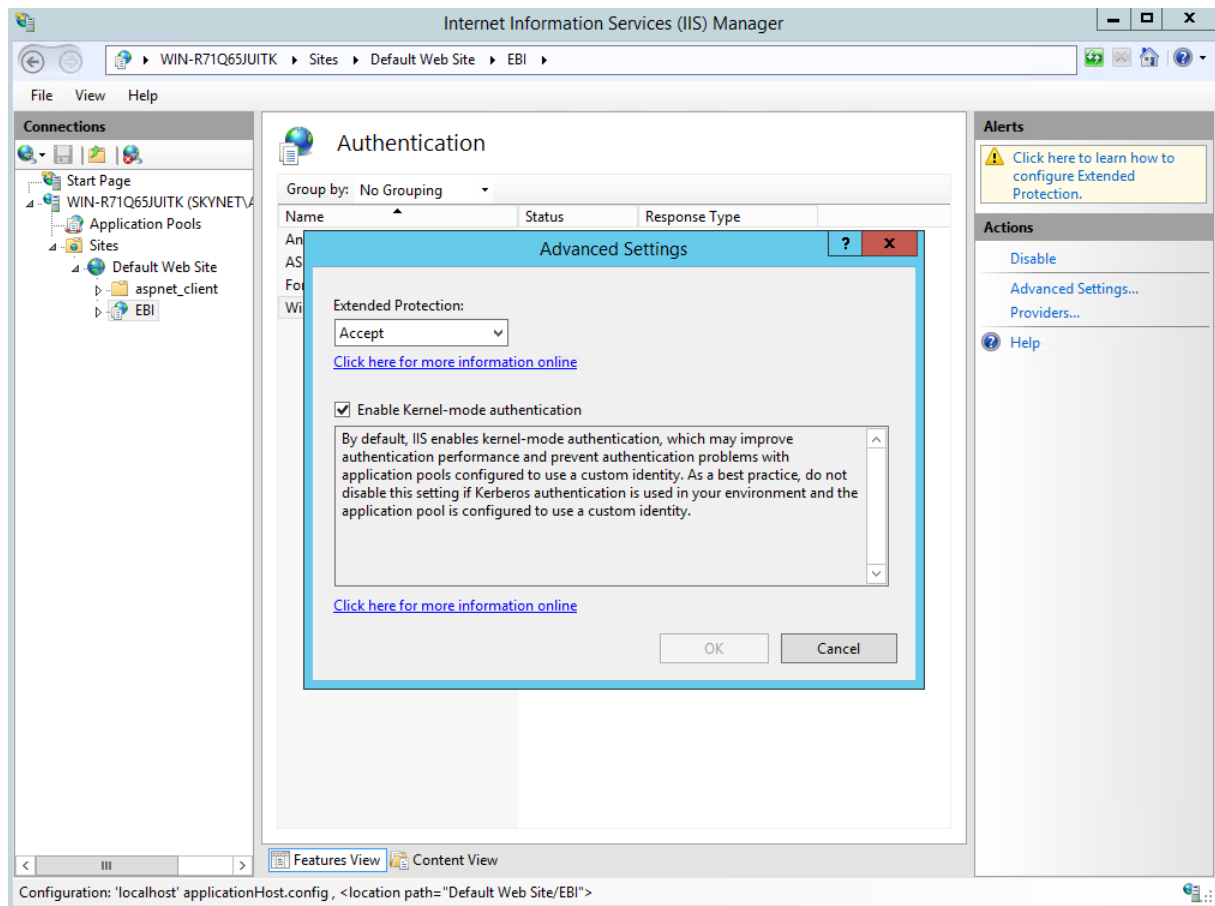
1. Make sure the "Windows Authentication" system component is installed.



- Open IIS Manager, select the "EBI" Virtual Directory, then select the "Authentication" icon, then choose the "Providers" option from the Actions menu and make sure the NTLM provider is at the top of the list.



3. Choose the "Advanced Settings" option from the Actions menu and set the "Extended Protection" setting to "Accept".



After taking the above steps, you should see the EnhancedBI Login screen. To sign into EnhancedBI using Windows Authentication, please hit the “Auto login” button.

The screenshot shows the 'Enhanced BI Login' screen. It has a blue background. At the top, the text 'Enhanced BI Login' is displayed in white. Below this, there are two input fields. The first field has a person icon and a vertical line, indicating a username field. The second field has a lock icon and the text 'Password', indicating a password field. Below the password field, there is a checkbox with the text 'Remember login settings'. At the bottom of the screen, there are two buttons: '→ Auto login' and '→ Login', both in white text on a dark blue background.

--- end of document ---